

THE CITY OF SPRUCE GROVE

BYLAW C-1065-19

Municipal Development Plan Amendment

Being a Bylaw to amend Bylaw C-960-16, the Municipal Development Plan for the City of Spruce Grove, in the Province of Alberta.

WHEREAS, pursuant to the Municipal Government Act, R.S.A. 2000, c. M-26, including amendments, allow the amendment of a Municipal Development Plan;

AND WHEREAS, the City of Spruce Grove wishes to amend Bylaw C-960-16, the Municipal Development Plan, as amended;

NOW THEREFORE, the Council for the City of Spruce Grove, duly assembled, hereby enacts as follows:

1. That Bylaw C-960-16, the Municipal Development Plan, be amended by deleting the following in strikethrough:

- 1.1 ~~5.2.4.3~~ ~~Develop a bus-friendly Urban Village in the area identified on Figure 8: Future Land Use, by encouraging:~~
 - ~~• higher density residential and commercial development, including low-to-medium rise buildings;~~
 - ~~• mixed commercial and residential development;~~
 - ~~• community and local businesses and services;~~
 - ~~• institutional and cultural facilities;~~
 - ~~• informal and formal parks;~~
 - ~~• connections for pedestrians and cyclists within the area and to other parts of the community;~~
 - ~~• visible interface between streets, and parks and/or buildings;~~
 - ~~• local transit stops and/or hubs with connections to a regional hub; and~~
 - ~~• neighbourhood wide landscaping and design standards.~~

- 1.2 6.2.2 Provide opportunities for mixed use development to occur in the City Centre and the Urban Village and for integrated land use development to occur in Gateway Lands as identified on Figure 8: Future Land Use.

1.3 Glossary of Terms

Urban Village

~~Bus-friendly residential neighbourhoods which may include:~~

- ~~• higher density residential and commercial development, including low to medium rise buildings;~~
- ~~• mixed commercial and residential development;~~
- ~~• community and local businesses and services;~~
- ~~• institutional and cultural facilities;~~
- ~~• informal and formal parks;~~
- ~~• connections for pedestrians and cyclists within the area and to other parts of the community;~~
- ~~• local transit stops and/or hubs with connections to a regional hub; and~~
- ~~• neighbourhood wide landscaping and design standards.~~

2. The following figures be replaced as outlined in Schedule 1, which is attached to and forms part of this Bylaw:
 - Figure 6 Parks and Open Space
 - Figure 8 Future Land Use
 - Figure 11 Major Employment Areas

3. This amending bylaw shall be consolidated into Bylaw C-960-16.

This bylaw shall come into force and effect when it receives third reading and is duly signed.

First Reading Carried	March 25, 2019
Public Hearing Held	November 12, 2019
Second Reading Carried	November 12, 2019
Third Reading Carried	
Date Signed	

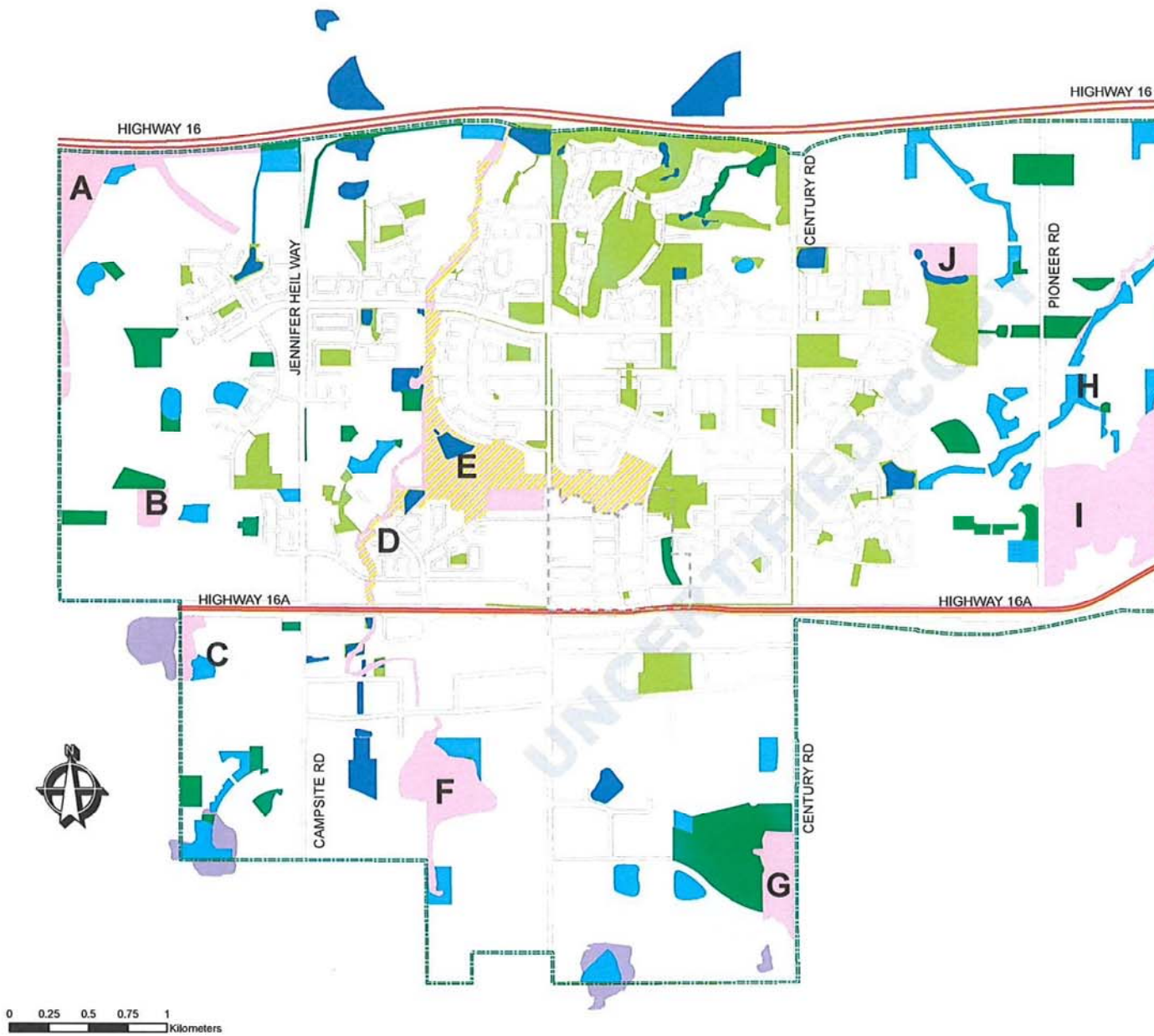
Mayor

City Clerk

Schedule 1
Bylaw C-1065-19

Figures 6, 8, and 11

Figure 6
Parks and Open Space



Municipal Development Plan
2010-2020

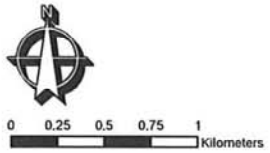
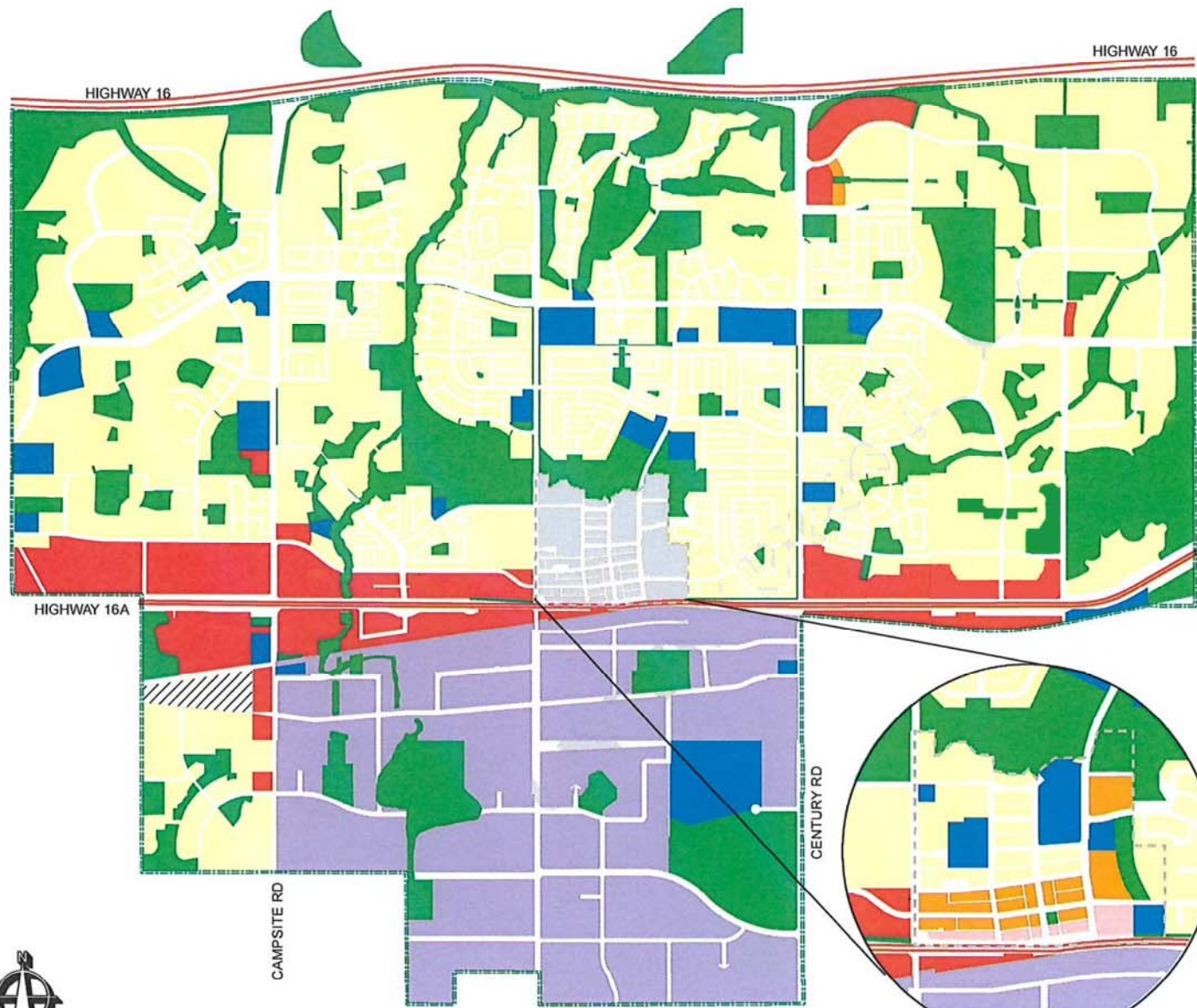


Figure 8
Future Land Use

- Residential
- Urban Village
- Mixed Use
- First Ave Commercial
- Vehicle Oriented Commercial
- Industrial / Business Park
- Institutional
- Open Space
- Special Study Area
- City Centre Boundary
- City Boundary



Municipal Development Plan
2010-2020

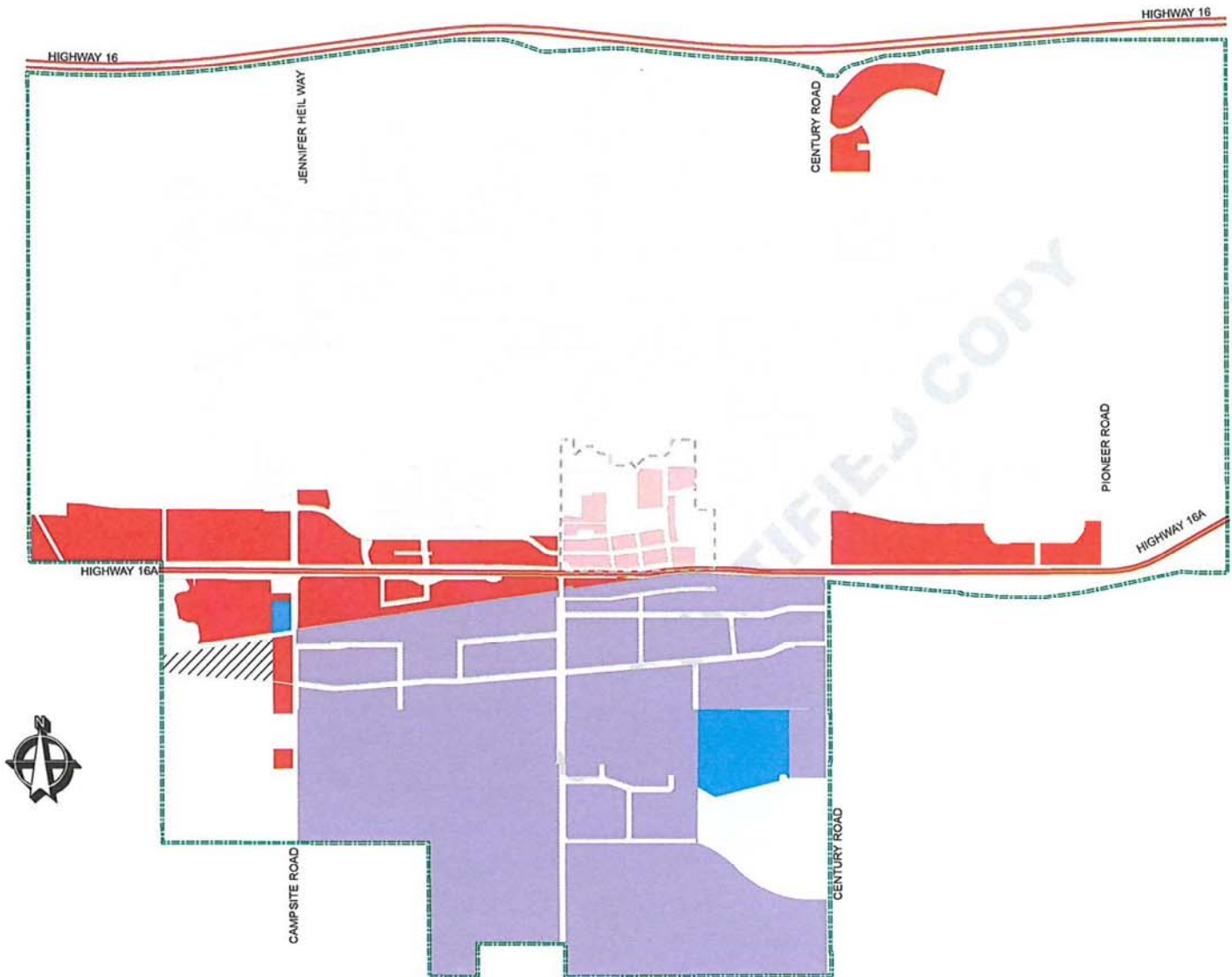
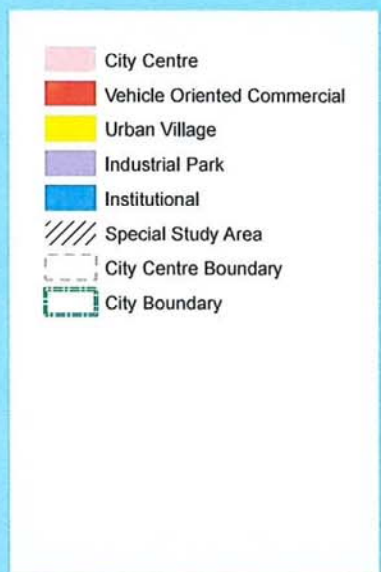


Figure 11
Major Employment Areas



Municipal Development Plan
2010-2020